

BSI

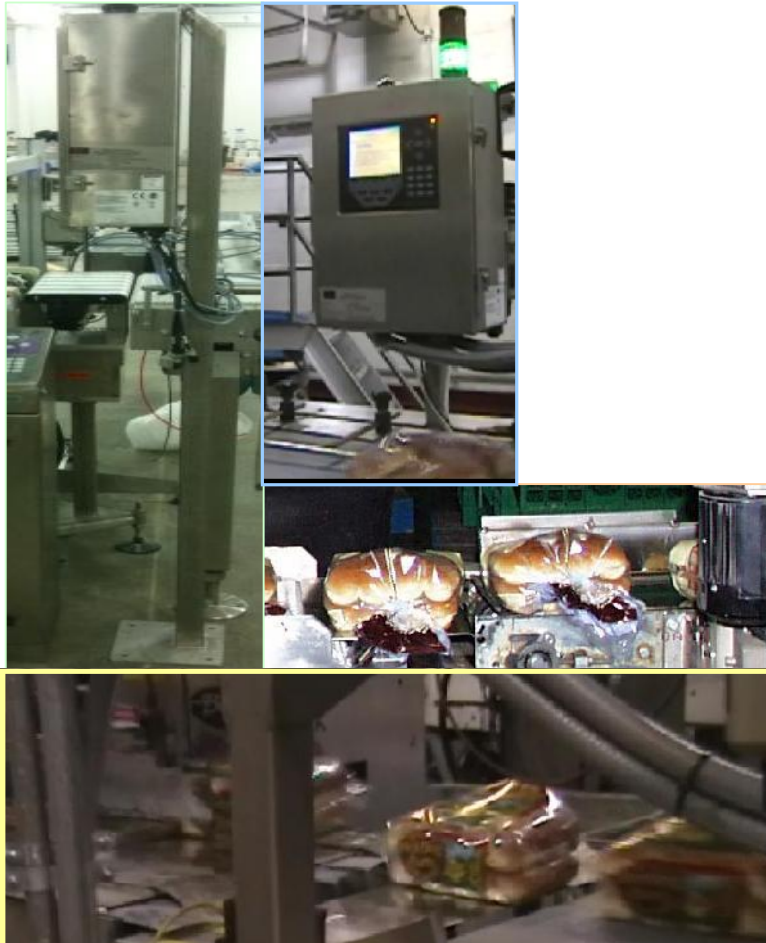
Bakery Systems, Inc.

5404 Jedmed Court

St. Louis, MO 63129

(314) 845-7778 FAX (314) 845-7779

www.bakerysys.com



Model VIM-60 VALIDATORS Packaging Area Checkweighers

John Ostenfeld ext. 318

jio@bakerysys.com

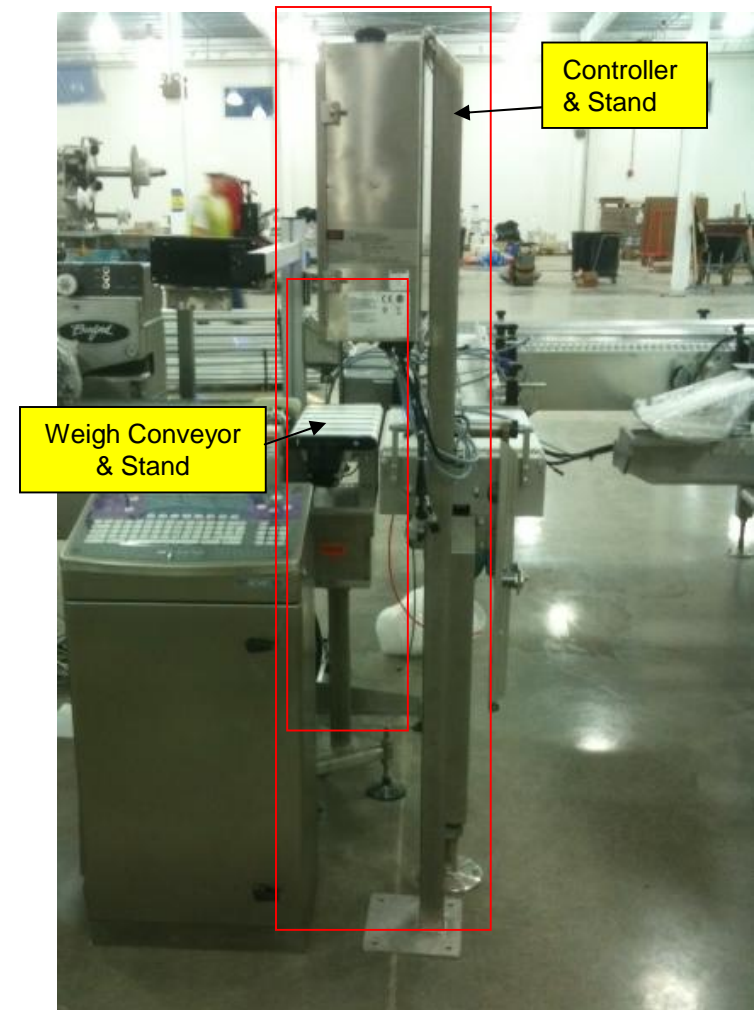
314.422.9985 cell

BAKERY SYSTEMS, INC.

- VIM-60 In-motion Validator Controller
- Self-contained Operator Interface and SST Stand
- SST NEMA 4X Enclosure
- Power Requirement: 120 VAC, Single Phase
- 24 VDC Control Power
- Ethernet/IP Industrial Network Connection (to Allen-Bradley PLC BBU data logging)
- TCP/IP Ethernet Connection (to remote PC for product management and raw data logging)
- Courtesy Ethernet Switch (5-port) to company router
- Stack Lights: Green = Product Weights are within USL & LSL Tolerance
Red = Barcode Scanner is blocked

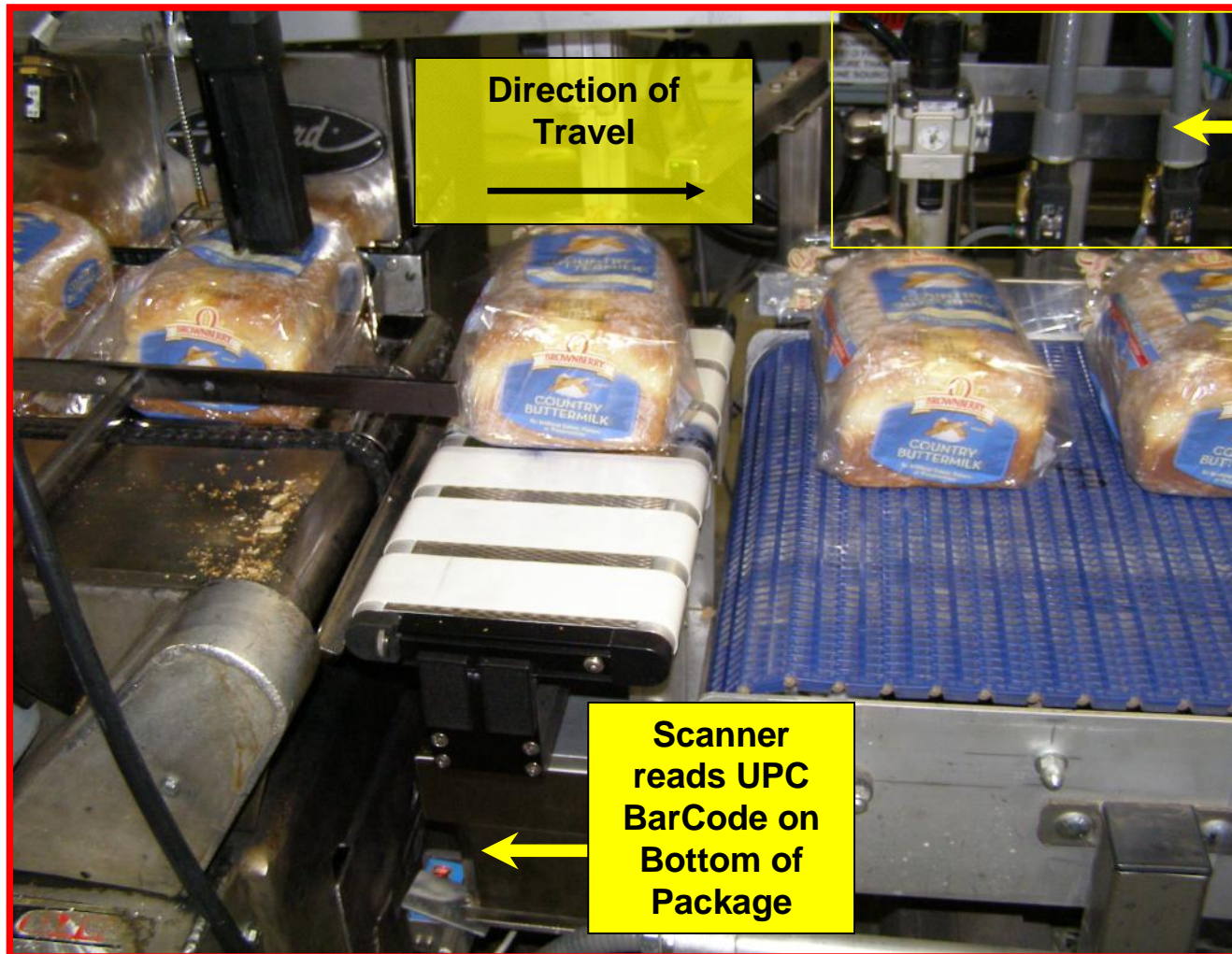


- VIM-60 In-motion Validator Weigh Conveyor & SST Stand
- Safety Tip Mechanism
- SST Precision Weigh Cell (4Kgs X 0.2 grams)
- 60 Packages Per Minute
- Integral Barcode Scanner and Air Crumb Blow-off
- 24 VDC Servo Conveyor Motor
- Output for Rejection of Under Weight Packages



BSI

Bakery Systems, Inc.
5404 Jedmed Court
St. Louis, MO 63129
(314) 845-7778 FAX (314) 845-7779
www.bakerysys.com



Direction of Travel



**Compressed Air
Regulator and
Solenoid Valves for
Crumbs and Rejects**

**Scanner
reads UPC
BarCode on
Bottom of
Package**

Example of PM Schedule

Use Safety Equipment

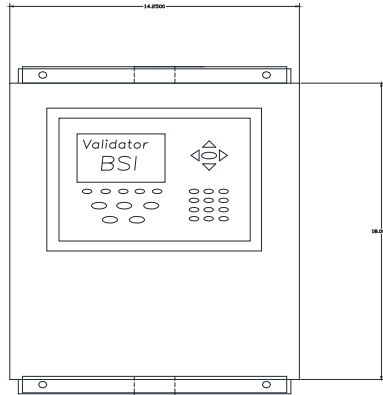
Do Not Bypass Safeties

Do Not Operate Equipment Without Guards in Place

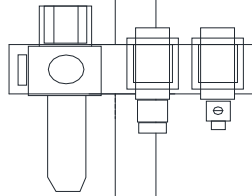
Use Proper Lock-Out/Tag-Out

- _____ [16643] B1 7 140 Validator Checkweigher 1A ~ Inspect the print scanner for correct operation. (7) 9/14/2012
- _____ [16644] B1 7 140 Validator Checkweigher 1A ~ Inspect the scale table for correct transfer heights. (7) 9/14/2012
- _____ [16786] B1 7 140 Validator Checkweigher 1A ~ Test the scale for correct calibration. (7) 9/14/2012
- _____ [66817] B1 7 140 Validator Checkweigher 1A ~ Inspect the control panel for proper operation. (7) 9/14/2012
- _____ [66818] B1 7 140 Validator Checkweigher 1A ~ Inspect the external wiring condition. (7) 9/14/2012

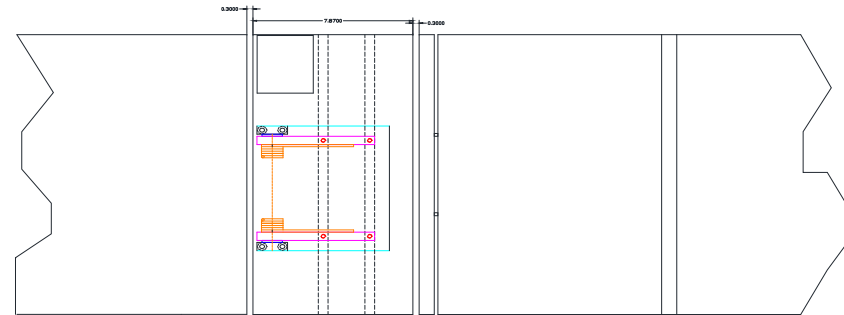
Validator Controller includes TCP/IP communications to a PC or optional Ethernet IP to A-B PLC Industrial Network



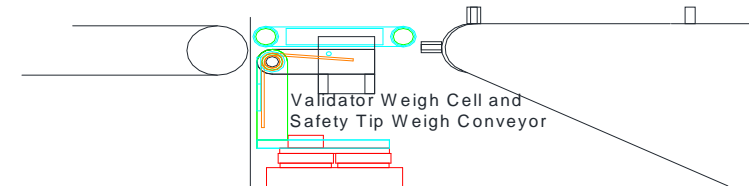
Air regulator and Air Solenoid Valves for Air Jet and Optional Reject



Exit Conveyor to Pattern Former **VALIDATOR VIM-60** Bagging Conveyor with Flights



Direction of Product Flow



Barcode Scanner Laser Line

Barcode Scanner and Air Jet to remove crumbs



NOTE:

The Validator (for ROLLS) opening should be approximately 12.8". Please measure from the bagging conveyors flight at the conveyor apex with approximately .333" clearance.

Likewise on the exit side of the Validator measure .333" clearance to the downstream conveyor to basket pattern former (or robotics).

- SAFETY IS NO ACCIDENT
- ACCIDENTS ARE AVOIDABLE
- ZERO INJURIES IS THE GOAL
- THINK SAFETY, WORK SAFELY
- REPORT INJURIES & UNSAFE SITUATIONS
- YOUR FAMILY DEPENDS ON YOU!